

Introduction to Game Programming and Robotics

Unit # 5

Acknowledgement

- Most of the example/material presented in this paper is taken from tutorials provided by Microsoft or from the book "Robot Development using Microsoft Robotics Developer Studio" by Kang, Chang, Gu and Chi.

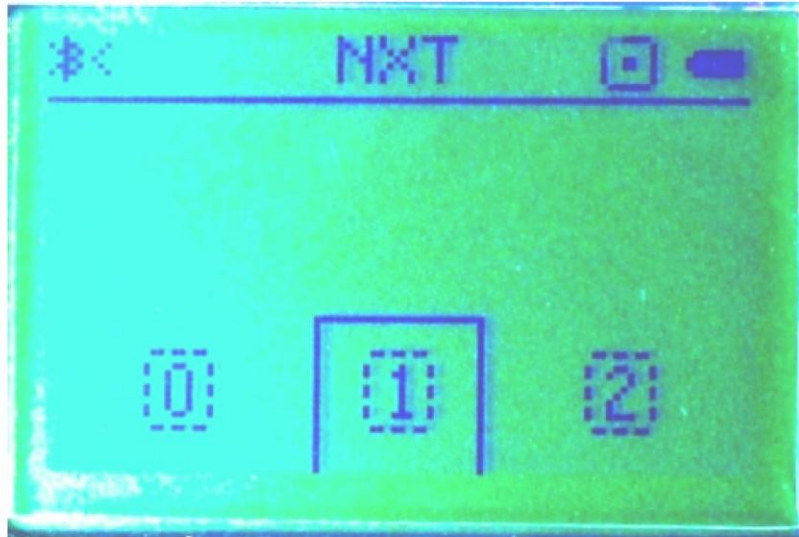
Making Bluetooth Connection



Making Bluetooth Connection (Cont'd)



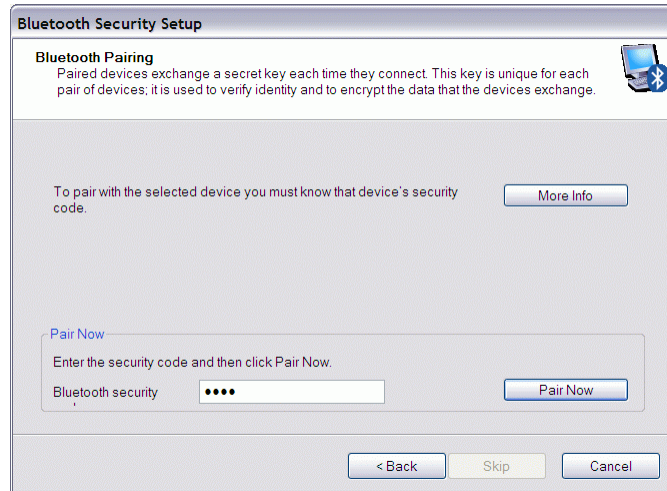
Making Bluetooth Connection (Cont'd)



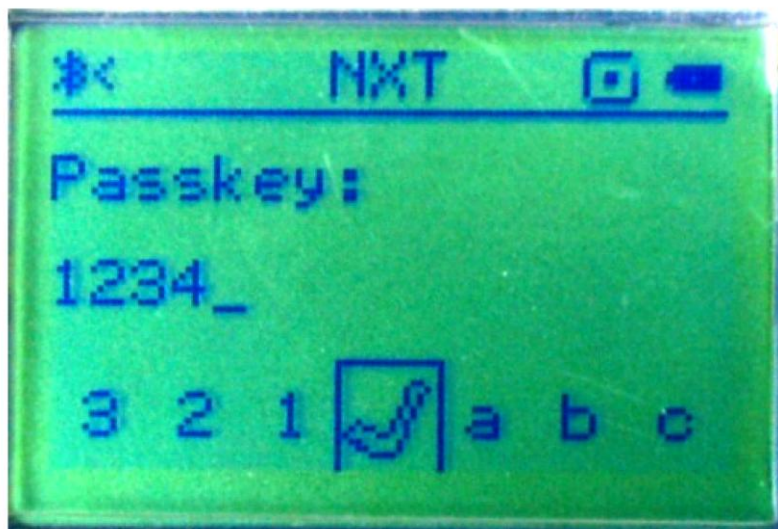
Making Bluetooth Connection (Cont'd)



Making Bluetooth Connection (Cont'd)



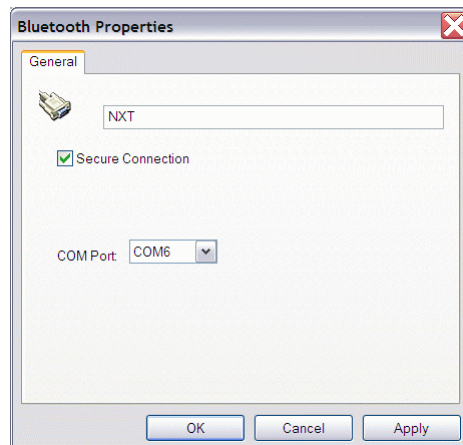
Making Bluetooth Connection (Cont'd)



Making Bluetooth Connection (Cont'd)

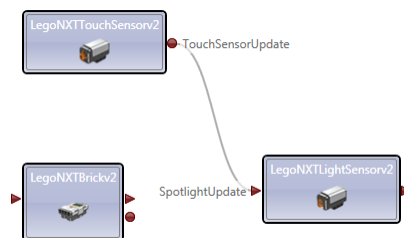


Making Bluetooth Connection (Cont'd)



Program 1 (Touch and Light Sensors)

- (a) When you press the touch sensors, light should turn on.
- (b) Add the logic which acts like a flip-flop (on one touch, the light is one and on another, light is off).



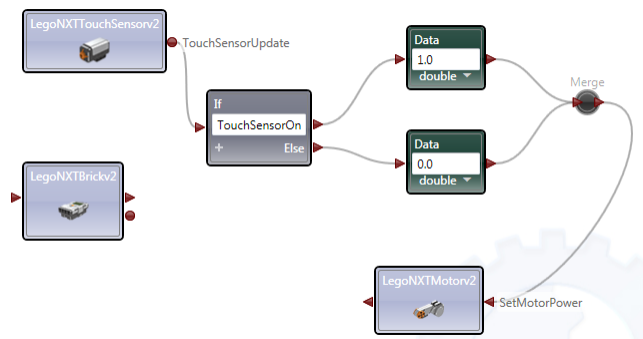
Sajjad Haider

Spring 2012

11

Program 2

- Move a motor when the sensor is touched.



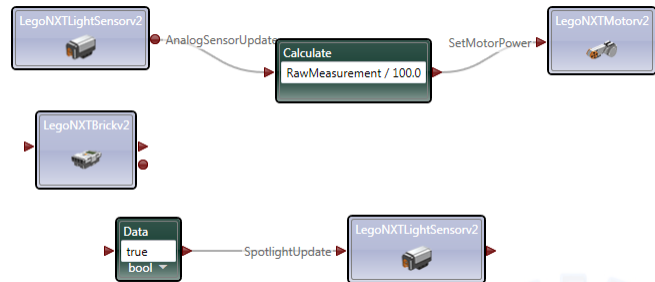
Sajjad Haider

Spring 2012

12

Program 3

- Control a motor using light sensor



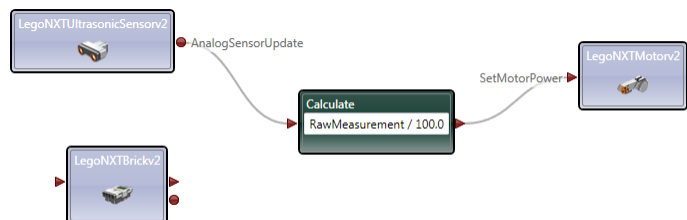
Sajjad Haider

Spring 2012

13

Program 4

- Control a motor using ultrasonic sensor.



Sajjad Haider

Spring 2012

14